

Swaledale Gardens, Fleet, GU51 2TE

£975 PCM



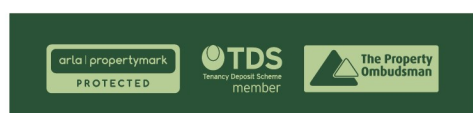
SINGLE OCCUPANCY ONLY

A one bedroom, second floor apartment located on the popular Ancells Farm development in Fleet within half a mile of Fleet mainline railway station and a mile and a half of the town centre. It is also ideally located for access to the M3 motorway. The accommodation comprises a spacious lounge, modern kitchen, one double bedroom and the bathroom. The property also offers resident's parking.

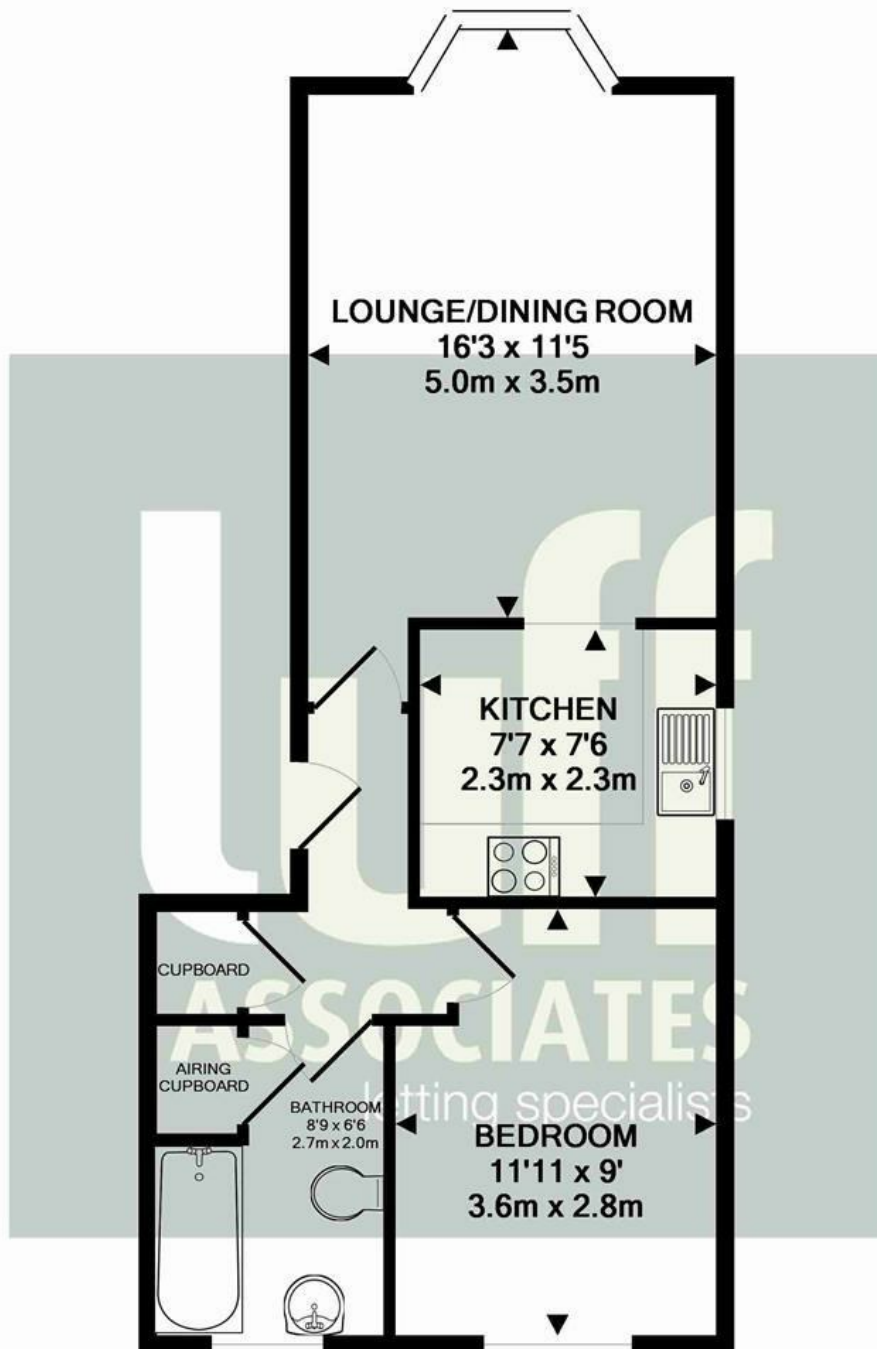
Unfurnished and available 14th March 2026
Regret no couples and no pets.

Council tax band: B
EPC rating: C
Minimum tenancy length - 12 months with a 6 month break clause

Deposit = 5 weeks rent - £1,125
First Months rent - £975
Holding deposit - £225 (will be deducted from the first months rent upon move in)



1a Guildford Road, Frimley Green, Camberley, Surrey, GU16 6NL
Tel: 01252 834949 admin@luff-associates.com www.luff-associates.com



Energy Efficiency Rating		
	Current	Potential
Very energy efficient - lower running costs		
(92 plus) A		
(81-91) B		
(69-80) C		
(55-68) D		
(39-54) E		
(21-38) F		
(1-20) G		
Not energy efficient - higher running costs		
England & Wales	EU Directive 2002/91/EC	

Environmental Impact (CO ₂) Rating		
	Current	Potential
Very environmentally friendly - lower CO ₂ emissions		
(92 plus) A		
(81-91) B		
(69-80) C		
(55-68) D		
(39-54) E		
(21-38) F		
(1-20) G		
Not environmentally friendly - higher CO ₂ emissions		
England & Wales	EU Directive 2002/91/EC	



In partnership with
LUFF & WILKIN
sales 01252 838 899

Disclaimer: The Rent advertised does not include the Tenancy Deposit or any fee's or charges which are payable. Further information can be obtained from the agent or at the point of viewing. These details have been prepared and issued in good faith and do not constitute representations of fact or form part of any offer or contract Luff Associates Ltd have not carried out a structural survey of the property, nor have we tested any of the services or appliances. All measurements are intended to be approximate only and all photographs show parts of the property as they were at the time they were taken. Any reference to alterations or particular use of the property wherever stated, is not a statement that planning, building regulations or other relevant sent has been obtained